

Chapter 3

PC Programming

Telephone Equipment & Service

www.ntcp.com
www.quick-manuals.com

254-965-3501

Table of Contents

Section 1	General Information	3-1
Section 2	Features of PC Programming	3-1
Section 3	Software Installation	3-2
3.1	Installing Electra Elite System Administration Terminal (SAT) Software.....	3-2
Section 4	Wizard	3-2
Section 5	Programming Screens	3-5
	Main Menu	3-5
	Pulldown Menu	3-5
	System Data Screen	3-5
Section 6	Toolbar	3-7
Section 7	Electra Elite Pulldown Menus	3-9
	File	3-9
	Edit	3-11
	Basic	3-12
	Application	3-14
	Users	3-16
	Communications	3-17
	Help	3-19

List of Figures

Figure 3-1	Accessing Wizard	3-3
Figure 3-2	Selecting Wizard for a Feature	3-3
Figure 3-3	Sample Wizard	3-4
Figure 3-4	Electra Elite System Administration Terminal Software Screen Samples	3-6
Figure 3-5	File Menu	3-9
Figure 3-6	Edit Menu	3-11
Figure 3-7	Basic Menu	3-12
Figure 3-8	Application Menu	3-14
Figure 3-9	User Menu	3-16
Figure 3-10	Communications Menu	3-17
Figure 3-11	Help Menu	3-19

PC Programming

CHAPTER 3

SECTION 1 GENERAL INFORMATION

This chapter provides detailed information for programming using the Electra Elite System Administration Terminal (SAT) software.

PC requirements:

- ① Microsoft Windows 95/98 operating system
- ① Available serial communication port on PC
- ① MNP Class 4 or V.42 bis modem (if remote programming is required)

KTS hardware requirements:

- ① MIFM-U10 KTU

SECTION 2 FEATURES OF PC PROGRAMMING

Some of the features of PC programming include:

Wizard – allows a user to select a feature using wizard. *Wizard* prompts the user to program the necessary system data items associated with the feature. When *wizard* is selected, a tabbed list of information is provided.

(For a detailed discussion of *wizard*, refer to Section 4 Wizard on page 3-2.)

System Data Upload/Download – allows system data to be transferred from/to a personal computer to provide backup of data.

SECTION 3 SOFTWARE INSTALLATION

3.1 Installing Electra Elite System Administration Terminal (SAT) Software

1. Insert the SAT CD ROM in the CD ROM drive.
2. Click the Windows 95/98 **Start** button.
3. Select **Run**.
4. Enter **a:\setup.exe** and click OK.
(If installing from CD ROM, enter the letter of the CD ROM drive.)
5. Follow the instructions on the PC installation program.
6. To start the SAT program:
 - Click the Win 95/98 start button.
 - Select PROGRAMS, NEC Electra Elite SAT.
 - Click Elite System Administration Terminal (SAT).
 - Enter the password. The default password is PASSWORD in uppercase letters.

SECTION 4 WIZARD

The *wizard* organizes system data assignments for programming individual features. When the user selects *wizard*, the system provides a tabbed list of information related to the selected feature.

Wizard can be accessed by using the wizard button from the toolbar or by selecting **Wizard** from the File pulldown menu. (Refer to Figure 3-1 Accessing Wizard.)



Figure 3-1 Accessing Wizard

When *wizard* is displayed, the technician can select any feature from the list or can begin entering letters of the feature name. As the name is being entered, Quick Search finds the matching letters and highlights the match.

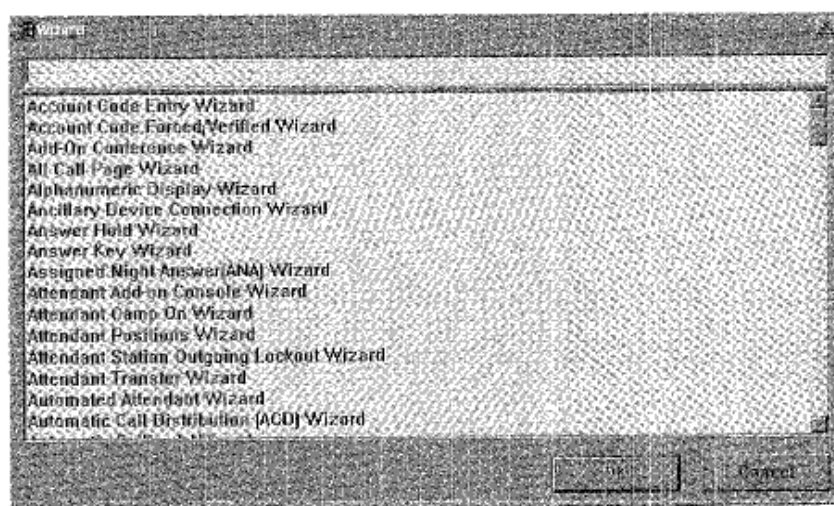


Figure 3-2 Selecting Wizard for a Feature

When a feature is selected, all system related data items for that feature are presented in sequence. Enter the required values in the current tab and click next to advance to the next tab. Click back to go to previous tab. In Figure 3-3 Sample Wizard, the Account Code Entry feature is selected.

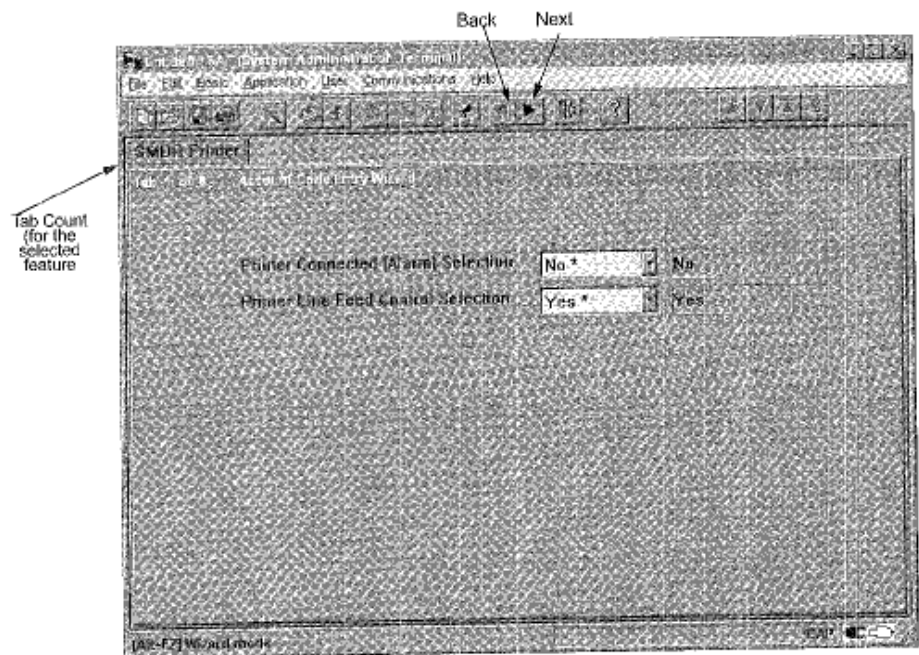


Figure 3-3 Sample Wizard

SECTION 5

PROGRAMMING

SCREENS

Main Menu

When the SAT software program is launched, the Main Menu screen is displayed first. This screen allows the user to access the options used to program the Electra Elite system. Figure 3-4 Electra Elite System Administration Terminal Software Screen Samples shows the menu and describes the layout.

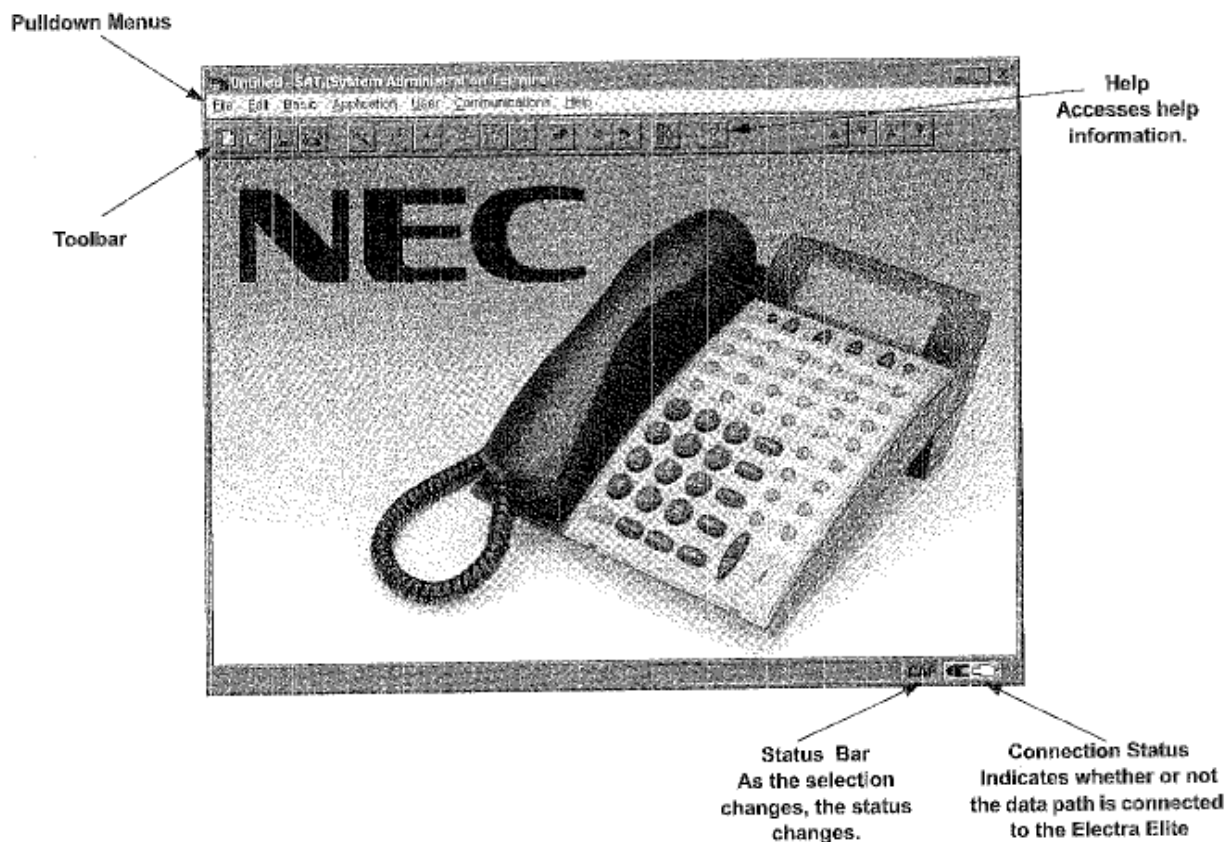
Pulldown Menu

Pulldown menus are available for each function involved in programming the Electra Elite system. To access the data associated with the function, click on the function name on the Main Menu. Some of the options on the initial pulldown menu offer several selections. An arrow to the right of the option name indicates additional selections are available. Refer to Figure 3-4 Electra Elite System Administration Terminal Software Screen Samples for an example of a Pulldown Menu.

System Data Screen

When an option is selected from a pulldown menu, a screen is displayed that allows the user to program data for the function selected. Figure 3-4 Electra Elite System Administration Terminal Software Screen Samples shows an example of a System Data Screen. This screen indicates three tabs. The tabs indicate system data items that are grouped together for programming. The active tab group is indicated by a box around the tab title. In the example, the displayed data is for the *Terminal/System Wide* tab group. To access another tab group, press the tab or use the keyboard shortcut. Keyboard shortcuts are displayed at the bottom of the screen in the Information Bar.

[Main Menu](#)



Pulldown Menu

System Data Item Screen

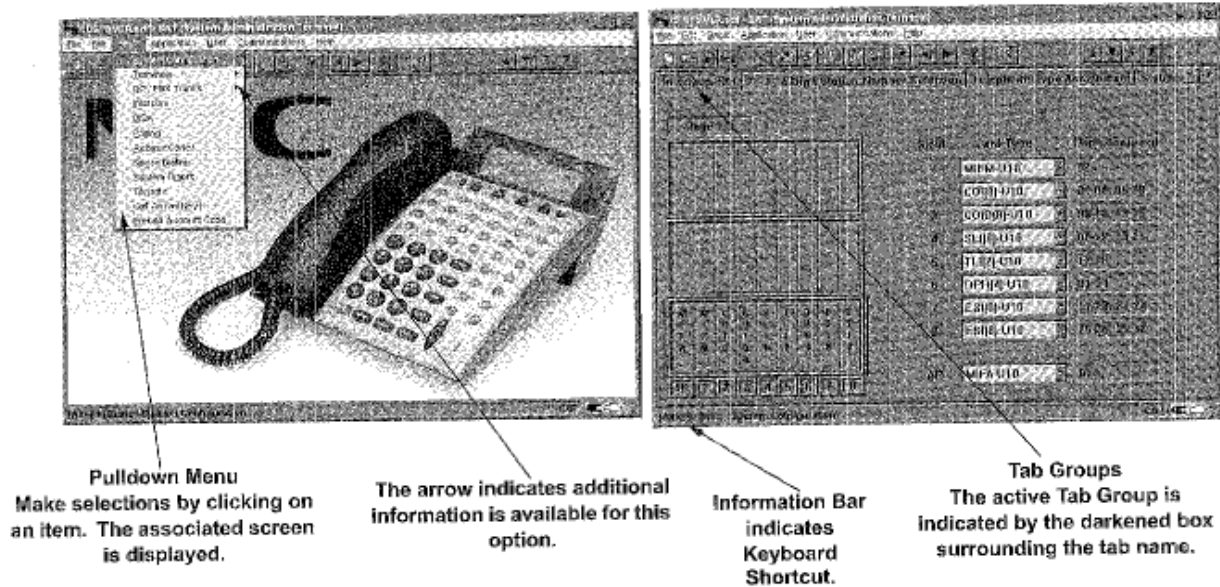


Figure 3-4 Electra Elite System Administration Terminal Software Screen Samples

SECTION 6

TOOLBAR

Several icons are provided to allow the user to navigate the program. The icons in the toolbar are explained in this section. The availability of the individual tools depends on the activity the user is performing. When the icon appears shadowed, the tool is not available. When the icon is dark, the tool is available. Refer to Figure 3-4 Electra Elite System Administration Terminal Software Screen Samples for an example.



Creates a new customer configuration file.



Loads or opens an existing customer configuration file.



Saves the customer configuration file to the hard disk, or floppy disk.



Accesses the Job Specifications printing option.



Accesses the *wizard* for individual features.



Sets the defaults for *all* items on the open tab.



Sets the defaults for the individual system data items (on the screen the default is set for the item where the cursor is blinking).



Allows data items to be copied between ports.



Allows values between two ports to be swapped.



Allows the user to undo the current edits and return to the previous editing operation.



Accesses Quick Search. Quick Search provides a detailed list of system data items.



Returns to the previous tab group.



Advances to the next tab group.



Displays the help contents for the Electra Elite SAT software program.



Scrolls up displaying the previous page.



Scrolls down displaying the next page.



Advances to the first page.



Advances to the last page.



Displays the Connection dialog box.

SECTION 7

ELECTRA ELITE

PULLDOWN MENUS

This section explains each of the pulldown menus that are available in SAT software.

File

The File pulldown menu provides options for basic file management.



Figure 3-5 File Menu

New

Creates a new configuration file.

Open

Loads an existing configuration.

Save

Saves the configuration file. This option is only available when a configuration file is open.

Save As

Saves a configuration file using a new name. This option is only available when a configuration file is open.

Close

Closes the current configuration file. This option is only available when a configuration file is open.

Wizard

Accesses the Wizard. Wizard is available for every feature offered in the Electra Elite system. Wizard provides all of the information necessary to program a feature. All of the system data items necessary for programming the feature are grouped together. The user can press the appropriate tabs to access system data and make the necessary changes.

This option is only available when a configuration file is open.

Change Password

Allows the user to change the SAT password.

Print

Provides two print options: Job Specifications and Designation Labels (requires a standard inkjet or laser printer).

When Job Specifications is selected, a menu is displayed with three print options for the Job Specifications: print a family (group) such as system-wide, trunk group, or tenant, print a range of Memory Blocks, or print an individual Memory Block.

When Designation Labels is selected, SAT automatically opens the DESI for Windows label printing application. The current telephone information is automatically exported to DESI. Labels can then be configured and printed for the telephones. This requires the NEC LASER Labels for printing on InkJet or Laser printers.

☞ For the Designation Labels option to be enabled, the DESI for Windows application must be installed on your computer. Installation is usually done during the installation of SAT.

Print Setup

Allows access to the printer setup screen. This allows the printer configuration to be modified.

Recent File

Displays the last two files that were opened. These are listed as 1 and 2. The user can select either file to open. This option is only available when New or Open is selected.

Exit

Exits the programming software. If changes have not been saved, the technician is prompted to save the changes before the program shuts down.

Edit

The Edit pulldown menu allows files to be edited or swapped.



Figure 3-6 Edit Menu

Undo

Allows the user to undo current edits and return to the previous editing operation.

Copy

Brings up the copy screen. This allows port information to be copied from one port to another.

Swap

Allows values **between** two ports to be swapped.

Set Default

Defaults to the current field where the cursor is positioned.

Set Default All

Allows the user to set all values to default on the open tab.

Quick Search

Allows the user to search the Memory Blocks by Memory Block Number, Memory Block Name, or Tab Name. After the search method is specified, a list is provided. The user can scroll through the list and click on the desired Memory Block. System data can then be modified as necessary.

Basic

The Basic pulldown menu allows access to basic programming items.

- ☛ Some menu items may be disabled if the appropriate hardware is not assigned, or a dependent data item is not set.



Figure 3-7 Basic Menu

System Configuration

This option allows the technician to configure the customer system by indicating the cards that are installed for each slot in the KSU.

Terminals

This option allows the technician to assign the terminals to the system. Several selections are available with this option.

- Ⓒ System Wide
- Ⓒ Station Base
- Ⓒ Multiline
- Ⓒ Single Line
- Ⓒ DSS/BLF
- Ⓒ Doorphones

CO/PBX Trunks

This option allows technicians to program system data related to trunk assignments.

Three selections are available with this option:

- Ⓒ System Wide
- Ⓒ Trunk Base
- Ⓒ Timers

Intercom

This option allows the technician to program system data related to intercom assignments

DISA

This option allows the technician to assign codes for Direct Inward System Access (DISA).

Paging

This option allows data related to paging assignments to be programmed.

Access Codes

This option allows the technician to enter Access Codes. Where appropriate, Access Codes are set to default system values.

Speed Dialing

This option allows data related to system and station speed dialing to be programmed.

System Timers

This option allows system-wide timers to be assigned.

Tenants

This option allows data related to tenant assignments to be programmed.

Call Arrival Keys

This option allows Call Arrival block assignments to be programmed.

Forced Account Codes

This option allows the technician to program the account code length and to assign account codes.

Application

The Application pulldown menu allows access to system data items relating to advanced system applications.



Figure 3-8 Application Menu

Code Restriction

This option allows code restriction assignments to be programmed.

SMDR

This option allows data related to Station Message Detail Recording to be programmed.

Tandem Transfer

This option allows the assignment of data related to the routing of a call through the system.

TLI/DID

This option allows data related to Tie Lines and Direct Inward Dialing to be programmed.

Three selections are available with this option:

- Ⓒ Trunk Base
- Ⓒ Networking
- Ⓒ Timers

DTI/T1

This option allows data related to the master clock and T1 signaling formats to be programmed.

ACD/UCD

This option allows the technician to set up Automatic Call Distribution and Uniform Calls Distribution Hunt groups.

Voice Mail

This option allows data related to the internal voice mail to be programmed.

VRS/Delay Announcement

This option allows data to be assigned for the VRS ETU (e.g., greetings).

Automated Attendant

This option allows the technician to program the data related to messaging.

Caller ID

This option allows Caller ID displays to be programmed and display assignments to be assigned per port.

ISDN/BRT

This option allows the assignment of information related to ISDN/BRT trunks such as SPID assignments, ISDN telephone numbers, and BRT/DTMF duration.

Users

The Users pulldown menu allows access to system data items related to speed dialing.



Figure 3-9 User Menu

Speed Dialing

This option allows the technician to program Speed Dial memories for each Multiline Terminal in the Electra Elite system.

Communications

The Communications pulldown menu allows access to system data items relating to direct and remote connections to the Electra Elite system.



Figure 3-10 Communications Menu

Connect

This option allows the technician to connect to the Electra Elite system.

Connection can be Direct or Remote. Direct connection is when the SAT PC is directly connected to the Electra Elite system. With Remote connection, the SAT PC uses a modem to dial into another external remote modem that is connected to the Electra Elite system. If the MIFM-U10 KTU is equipped with a socket modem (modem kit part no. 750620), then the external remote modem is not needed. For Direct connection to the KTS, connect the serial cable included with the SAT from a free serial port on the SAT PC to the COM 1 port on the KTS. Select Communications, Connect. Select the Setup button to choose PC COM port. Choose Direct Connection and click the Connect button. For Remote connection to the KTS, choose Modem Connection and select the Dial button. For the Modem connection, the PC must have an MNP Class 4 modem. This connection allows the user to program a KTS located at a remote location.

In either case, after a successful connection is established with the KTS, you are ready to upload and download data to and from the KTS.

Disconnect

This option allows the technician to disconnect from the Electra Elite system.

Upload

This option allows the technician to upload programming changes and configurations to the KTS.

Download

This option allows the technician to download the current Electra Elite configuration.

Verify

This option allows the technician to compare the configuration programmed in the KTS with that of the PC.

First Initialization

This option reinitializes the system to the factory-set defaults.

All active calls on the system are dropped.

Second Initialization

This option reboots the system without resetting the programmed defaults (i.e., all programming is retained).

Setup

This option allows the technician to set up the system to provide communication. Four options are available for this selection.

- ④ PC Serial Port — serial port of the PC that is connected to the KTS.
- ④ Access Password — the password programmed in Memory Block 1-8-17 on the KTS.
- ④ Site Name — the name of the site that is being programmed.
- ④ Setup & Initialize — the KTS port settings/configurations.

Help

The Help pulldown menu allows access to online help.



Figure 3-11 Help Menu

Using Help

This option provides access to the help topics window that describes how to use the help function.

Contents

This option provides access to the help topics that are available for the Electra Elite System Administration Terminal system.

Help Topics

This option provides a list of help topics. The user can bookmark topics that they may want to refer to again.

Show MB Numbers

When the cursor is positioned over a data field, the memory block number is displayed above the cursor.

About

This option provides information about the System Administration Terminal software (SAT).