

OfficeServTM Softphone

Enterprise IP Solutions

The Samsung OfficeServ Softphone transforms a personal computer into a powerful communication tool with the full range of Samsung's iDCS telephone features. Softphone is a Voice over IP (VoIP) application that enables iDCS 500 R2 or iDCS 100 R2 users to communicate with the switch over the LAN or WAN from their PC. With a USB headset or handset, the Softphone provides virtually identical functionality as the ITP-5012L and ITP-5021D desktop ITP phones.

As a member of the Samsung OfficeServ Suite of Computer Telephony Integration (CTI) Applications, Softphone is a software-based solution that loads directly onto a laptop or desktop PC running Microsoft Windows® 2000 or XP operating systems. It is the ideal solution for the telecommuter and road warrior. These mobile professionals remain fully connected and productive by placing internal and external calls as if they were in their own offices. Initiating a conference call with up to five participants from an airport lounge, speed dialing a colleague while working at home, and checking voicemail messages from a hotel room when traveling on business are a snap with Samsung's OfficeServ Softphone.



Samsung Means Business

SAMSUNG

OfficeServ™ Softphone

Softphone seamlessly provides enterprise mobile professionals with access to their business telephone systems as if they were at their own desks – wherever and whenever. Following are some of the benefits of Softphone:

- ▶ Rich set of iDCS telephone features
- ▶ Familiar interface that captures the functions of the large display phone, ITP 5012L
- ▶ A true voice and data convergence solution using a single desktop device
- ▶ Intuitive, flexible interface with four selectable skins or interfaces and 99 programmable keys
- ▶ Import/Export Outlook® Contacts, look up, and direct dial from Personal Directory
- ▶ Call logs/History tracks for all inbound and outbound calling activity
- ▶ Short message capability among Softphone users
- ▶ Message notification and voicemail access

OfficeServ Softphone is available for iDCS 500 R2 or iDCS 100 R2 with the following minimum system release versions:

Product	Release Version
iDCS 500 R2	2.44 or higher
MGI 2	1.24 or higher
MGI 3	3.56 or higher
OSM 500	3.07 or higher

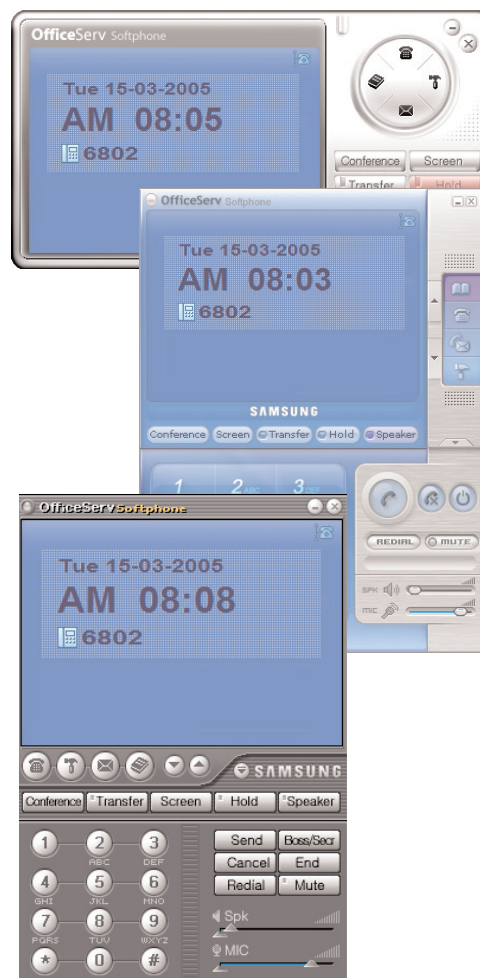
Product	Release Version
iDCS 100 R2	2.44 or higher
SMGI 3	3.56 or higher
OSM 100	3.56 or higher

OfficeServ Softphone is compatible with the following iDCS 500 and 100 applications:

Application	Release Version
OfficeServ EasySet	2.8.0.0 or higher
SmartCentre	3.02 or higher
SVMi 4E/8E/16E	All releases

OfficeServ Softphone has the following minimum PC system requirements:

Category	Specification
Operating System	Windows 2000 Series (Professional, Server, and Advanced Server) or Windows XP Professional/Home Edition
Processor (CPU)	Pentium 4, 1.6 GHz or higher
Memory	512 Mbytes or higher
HDD	20 Gbytes or larger
Network Interface Card	10/100 BASE-T
Sound Card	Bi-directional sound card
Others	USB Headset, USB Handset, or microphone and speaker



Microsoft Windows and Outlook are registered trademarks of Microsoft Corporation in the USA and/or other countries.

Features subject to change without notice.

www.samsung.com/bcs